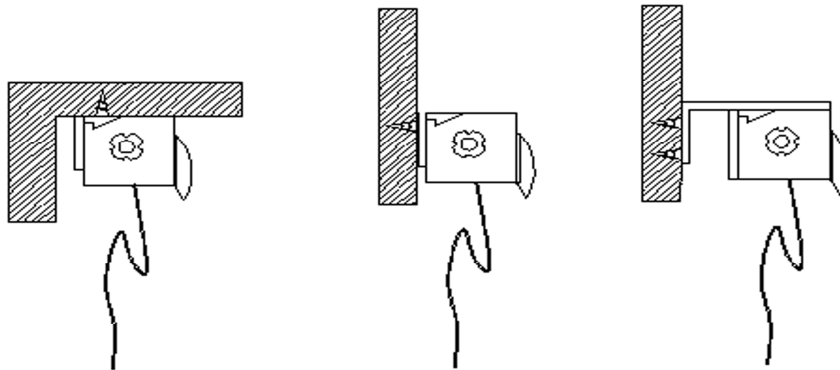


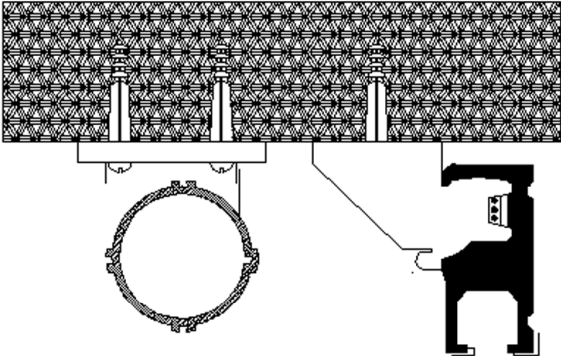
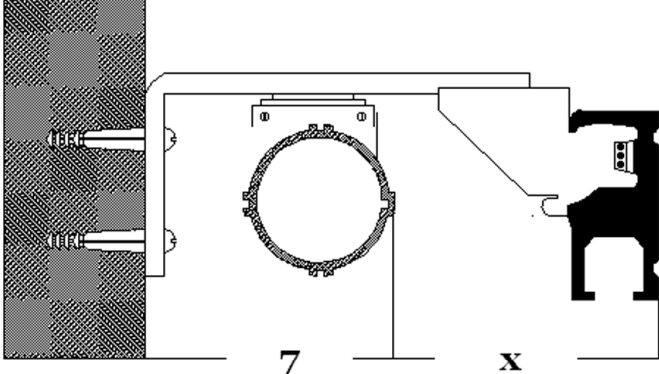
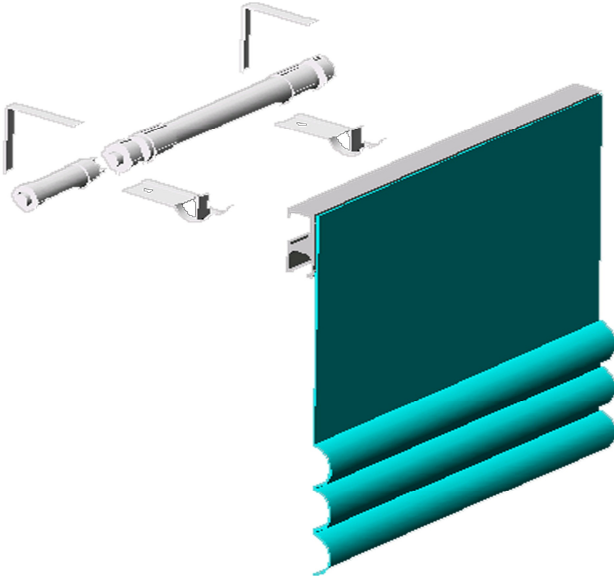


Products information

- Elegant shaped aluminum profile, together with Velcro hook tape.
- Simple Face-fix and Top-fix installation.
- Removable, conic shaped drums; thus smooth and straight operation of the system is guaranteed.
- Easy assembling and smooth operation guaranteed.
- Self-braking endless chain control units 1:4, heavy-duty.
- Total maximum fabric weight: $\pm 7,5$ Kg (6 LBS).
- Colors available: white.
- Available length: 5.80 meter (19').
- Track finish: chromate powder coated.
- Limited lifetime warranty.
- Profile Weight: 409 grams per meter (4.40 ounce per ft.). Aluminum extrusion 6063 T5.
- Dimensions: 34 mm x 37 mm (115/16" x 117/16").



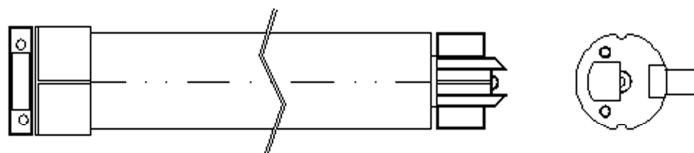
Motorized Roman Blind



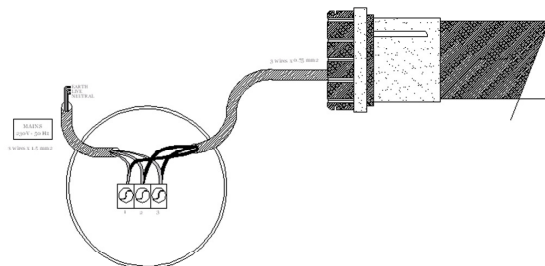


Motor Specification:

- **Torque:** 6Nm
- **Voltage:** 230V
- **Frequency:** 50Hz
- **Power:** 90W
- **Current:** 0.5A
- **Speed:** 26 rpm
- **Thermal overload protection**
- **CEE Standard**
- **Mechanical end stop (electronic end stop for all Built-in receiver motors)**
- **Weight:** 1.2 kg
- **Standard:** IP 44



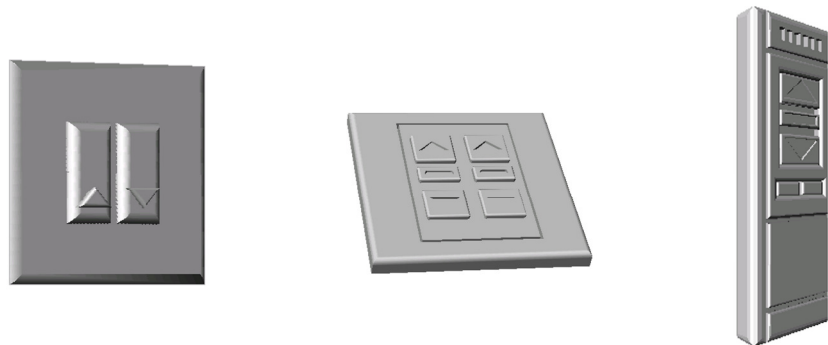
Connection for built-in motor



Control

- **Standard Switch 3 positions Up-stop-Down.**
- **1 and 6 Channels RF remote control.**
- **Wireless Switch (Plus timer if needed) ideal to be used as master switch.**
- **Can be connected to most Building management system**

Figure 1



Optional Accessory

- **Increase of cost efficiency by using the optional centre support bracket set which allows powering two connected systems with one motor. It can also be combined with the continuous head rail for easy on-site fixing.**

